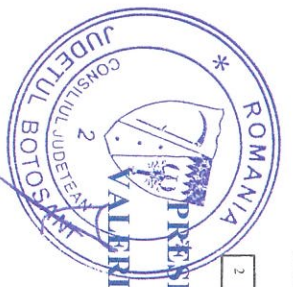
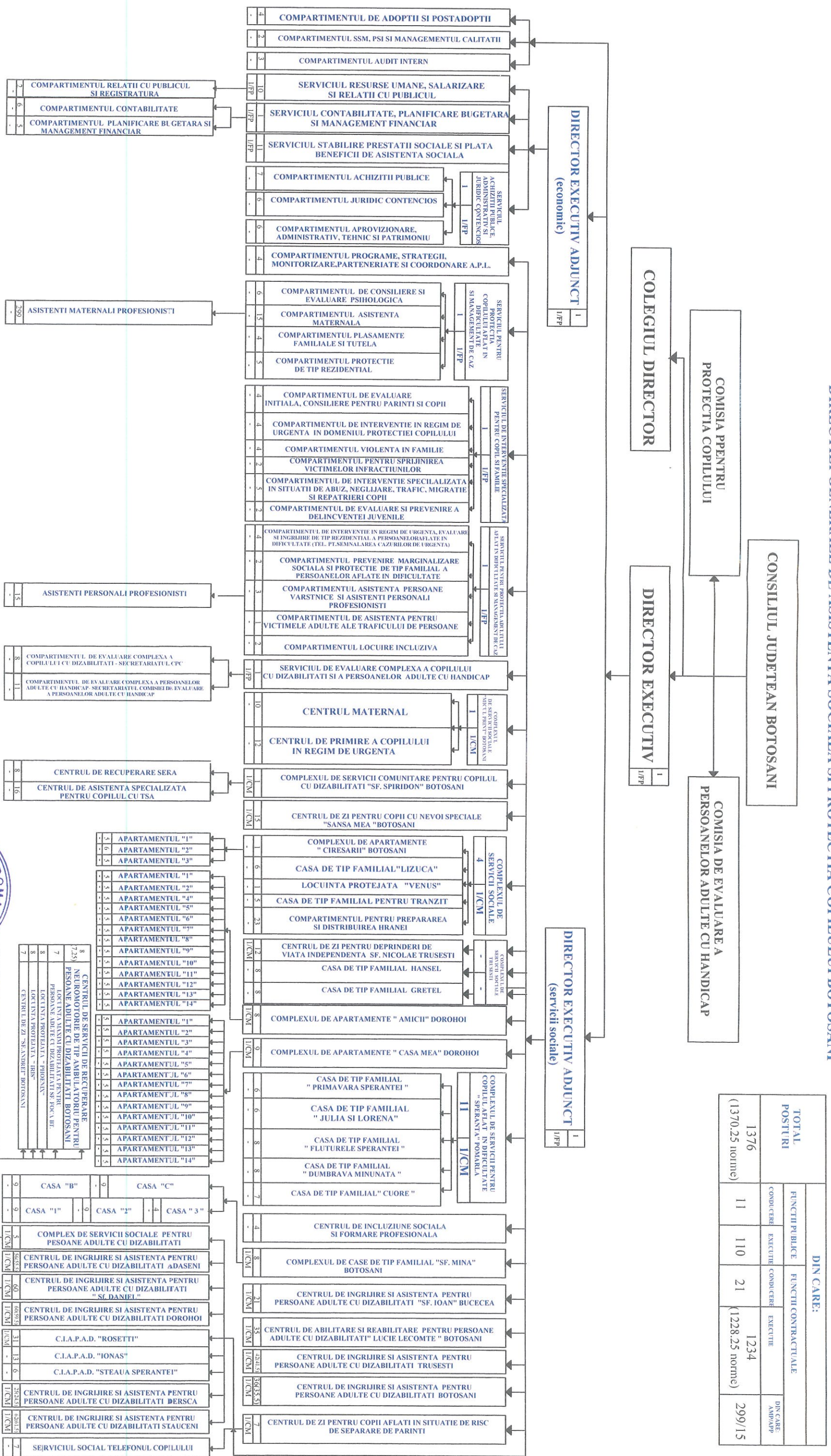


DIRECTIEI GENERALE DE ASISTENTA SOCIALA SI PROTECTIA COPILULUI BOTOSANI

ORGANIGRAMA

Anexa nr. 1
la Hotararea Consiliului Județean
nr. 56/26.03.2026



PRESEDINTE
ALEXANDRU IFTIME

SECRETAR GENERAL AL JUDETULUI
MARCEL STELICA BEJNARIU

CONTRASEMNEAZA